

Department of Civil & Environmental Engineering:
Transportation Engineering & Science Program
<http://tesp.engr.utk.edu/>

325 John D. Tickle Building
Knoxville, TN 37996-2313
Phone: (865) 974-2503
Fax: (865) 974-2669
cee@utk.edu



Background

- Transportation program in CEE Dept. & concurrently at CTR
- Addressing wide variety of transportation issues
- Building educational infrastructure
- A nationally known transportation program



People

- CEE Faculty

- Dr. Chris Cherry
- Dr. Lee Han
- Dr. Asad Khattak
- Dr. Shashi Nambisan

At CTR

- Dr. David Clarke
- Dr. Steve Richards
- 30 staff members

Affiliated Faculty

- Dr. Baoshan Huang (pavements)
- Dr. David Greene (energy)
- Several other faculty in various departments

CEE Graduate Students in Transportation Area (2014)

- 8 Ph.D., ~10 Masters

Scholarship (Examples)

- Memberships in four TRB Committees



- E.g., User Information Systems committee

- Editorial responsibilities

- Editor, *Journal of Intelligent Trans Systems (SCI)*
- Associate Editor, *International Journal of Sustainable Transportation (SCI)*



Annual publications/presentations (CEE Faculty)

- ~15 journal papers per year
- 12-15 TRB & other conference presentations
- Best paper award-ITS World Congress, 2011



Transportation Engineering & Science Faculty



Dr. Christopher Cherry
Associate Professor



Dr. Lee D. Han
Professor



Dr. Asad J. Khattak
Beaman Professor



Dr. Shashi Nambisan
Professor

- ✧ Transportation Safety
- ✧ Sustainable Transportation
- ✧ Technology Solutions including Intelligent Trans Systems
- ✧ Planning and operations
- ✧ Modeling, simulation and visualization

Dr. Cherry's research



Dr. Christopher Cherry
Associate Professor

- Sustainable Transportation
- Non-Motorized Transportation Safety
- Travel Behavior and Demand
- Transportation Economics
- Commercial Vehicle Safety
- Transportation and the Environment
- Multimodal Transport, Planning & Operations
- Transit Security and Shared Vehicles

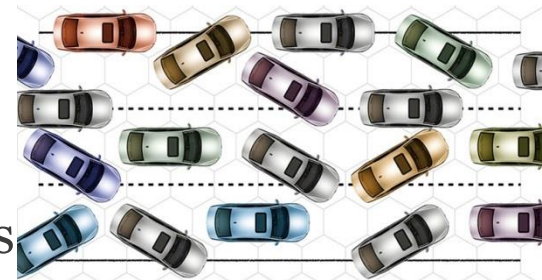


Dr. Han's Research



Dr. Lee D. Han
Professor

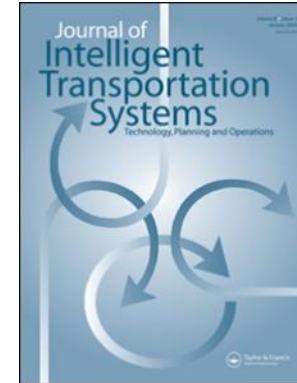
- Application of Advanced Technologies to Transportation
- Intelligent Transportation Systems (ITS)
- System Modeling and Simulations
- Traffic Flow Theory, Traffic Operations
- Transportation Data and Information Systems
- Emergency Evacuation and Management
- Crash Records and Analysis
- Transportation Logistics, Operations Research, and 3D Visualizations



Dr. Khattak's Research



Dr. Asad J. Khattak
Beaman Professor



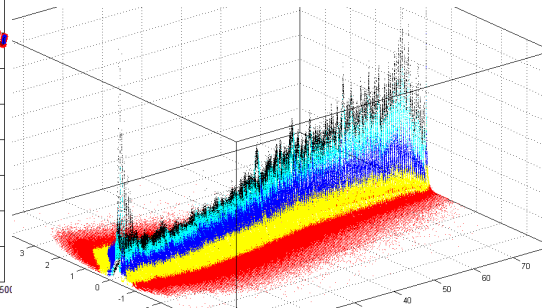
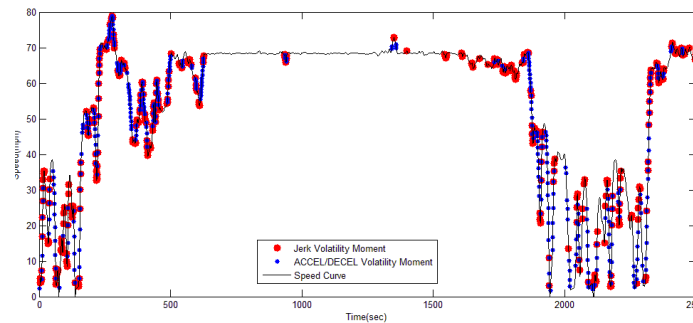
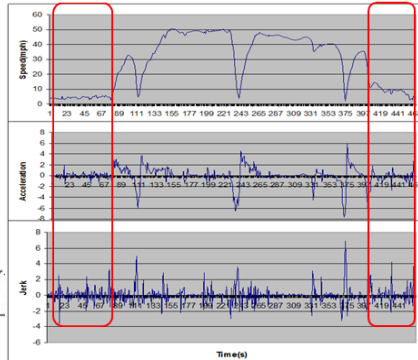
Joined UT in 2013

Editor-in-Chief, Journal of Intelligent Transportation Systems, Taylor & Francis Publishers, 2003-to date

Editor-in-Chief, International Journal of Sustainable Transportation, Taylor & Francis Publishers, 2006-to date

- Intelligent Transportation Systems
- Transportation Safety
- Transportation Planning and Sustainable Transportation

LOCAL Roads Interstate or arterial LOCAL Road

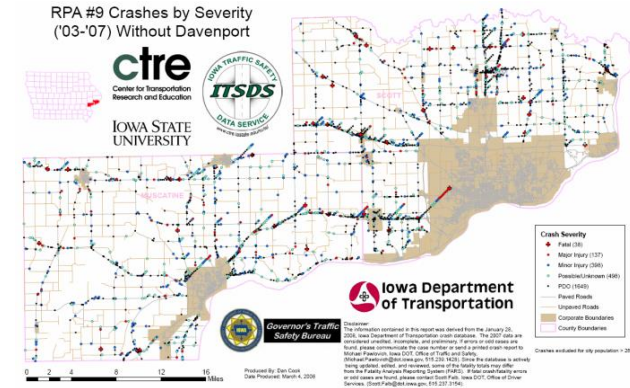


Dr. Nambisan's Research



Dr. Shashi Nambisan
Professor

- Joined UT in 2014
- President for Council of University Transportation Centers (CUTC) in 2014-2015
- Authored or co-authored 110 peer reviewed journal and conference publications
- Highly active in presenting work at international, national, and regional conferences and at universities
- Transportation and infrastructure systems management
- Safety and risk analysis



Related transportation faculty: Dr. David Greene & Dr. Baoshan



- Technological and economic potential for fuel economy improvement
- Impacts of fuel economy policies
- Potential to mitigate greenhouse gas emissions from transportation
- Modeling energy transitions for transportation
- Estimating the costs of oil dependence



- Infrastructural Materials
- Pavement Engineering and Geotechnical Engineering

UT Center for Transportation Research



- 30 staff + many students
- ~\$6 million expenditures/yr
- <http://ctr.utk.edu/>



Dr. David Clarke-Director CTR:

- Rail Track, Structures, and Operations
- Transportation Demand
- Transportation Safety
- Transportation Planning
- Freight Transportation Systems
- Network Modeling

Dr. Steve Richards-Director Southeastern Transportation Center (part of CTR):

- Accident Data Analysis,
- Congestion Management
- Construction Zone Safety
- Pedestrian/Bicycle Facilities and Issues
- Railroad-Highway Grade Crossings
- Roadside Design, Traffic Models
- Truck Safety

Potential for collaboration with UT

- UT capabilities in transportation research include:
 - Safety, intelligent trans systems, sustainability, planning & operations
 - Modeling, simulation, and visualization of transportation systems
- Application of these capabilities to addressing transportation issues nationally and locally
- Faculty has national and international expertise...

Thank you !!

Department of Civil &
Environmental Engineering
325 John D. Tickle Building
Knoxville, TN 37996-2313
Phone: (865) 974-2503
Fax: (865) 974-2669
cee@utk.edu

